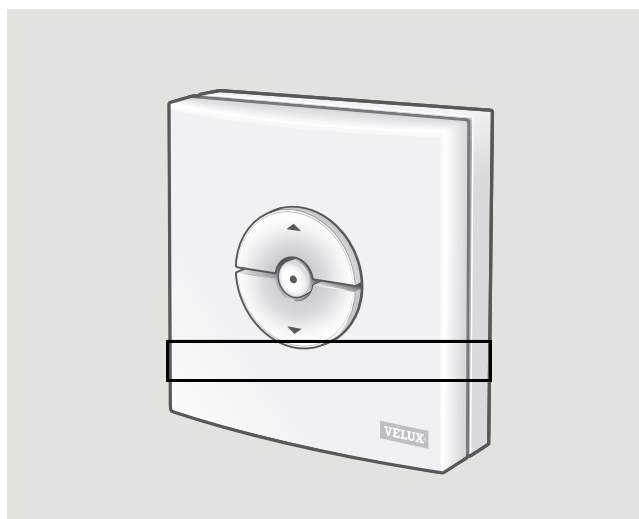


This velux system only operates the left hand window, which if left open will automatically close if it rains and will not re-open until dry.

VELUX®

VELUX INTEGRA®
KLI 310/311/312



ENGLISH: Instructions for wall switch

ESPAÑOL: Instrucciones para el interruptor de pared

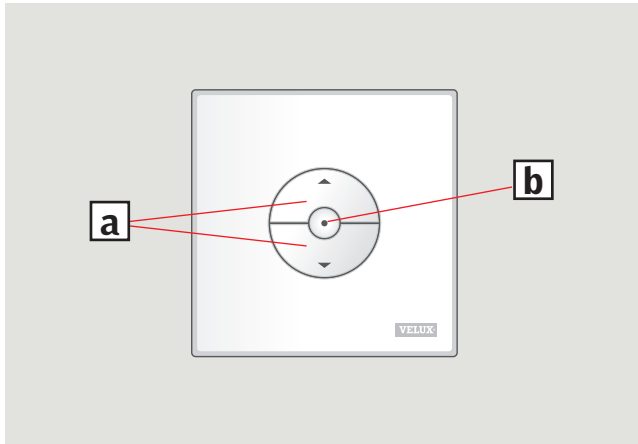
FRANÇAIS : Instructions pour le clavier mural

日本語: リモコン KLI 310 / 311 / 312 の取扱説明書



VAS 454332-2018-04

QUICK START



Operation

A wall switch provided with a VELUX INTEGRA® product has been pre-prepared with/registered in this product and needs **no additional set-up** to operate the product.

See "Advanced set-up" for set-up of wall switch purchased separately.

Keys for operating the product **a**

⬆️ OPEN/UP or ⬆️ CLOSE/DOWN

Short key pressure: The product will travel to maximum top or bottom position.

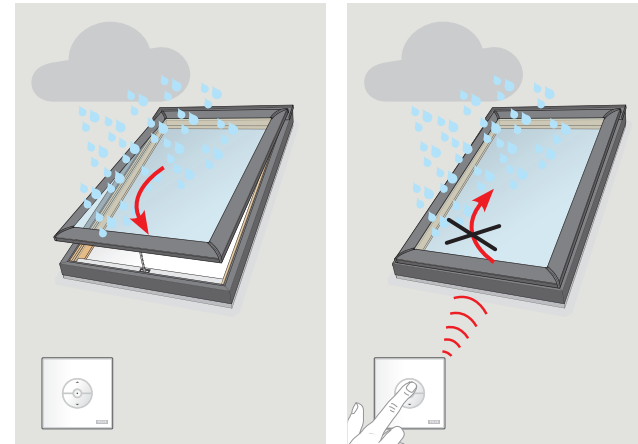
Long key pressure: The product will travel only until the key is released.

Note: If several electrical products are connected to a control unit KLC 500, only one of the products (random) can be operated in this way.

Stop key **b**

⬆️ The product stops.

QUICK START



Rain sensor

VELUX INTEGRA® skylights come with a rain sensor.

If the rain sensor is activated, the skylight will close automatically within approximately 30 seconds and the rain sensor will not allow the skylight to open as long it is activated.